

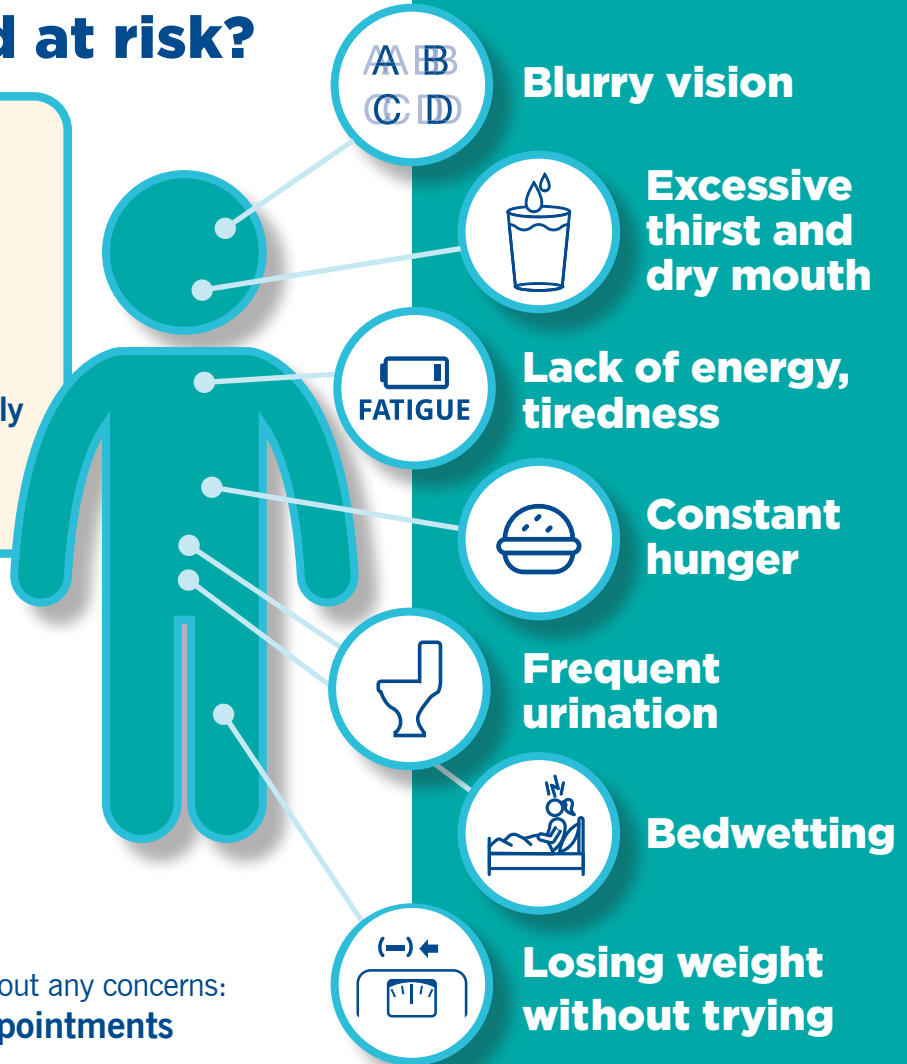
# TYPE 1 DIABETES:

When the body doesn't make enough insulin

## Is your child at risk?

### Risk Factors:

- Family history of Type 1 diabetes
- Age: Most frequently diagnosed in children and teens



Akron  
Children's

Talk to your pediatrician about any concerns:  
[akronchildrens.org/appointments](https://akronchildrens.org/appointments)