



Viral Epidemiology Snapshot: September 3-9, 2023

Prepared by Anne Hall, Ph.D., M(ASCP) on behalf of the Molecular Diagnostics/Virology Labs

CoV-2, Flu, & RSV

Virus	#Tested	#Positive	% Positive
Flu A	257	5	1.9%
Flu B	257	0	0.0%
RSV	236	1	0.4%
CoV-2 Diagnostic	600	47	7.8%
CoV-2 Screening	2	0	0.0%

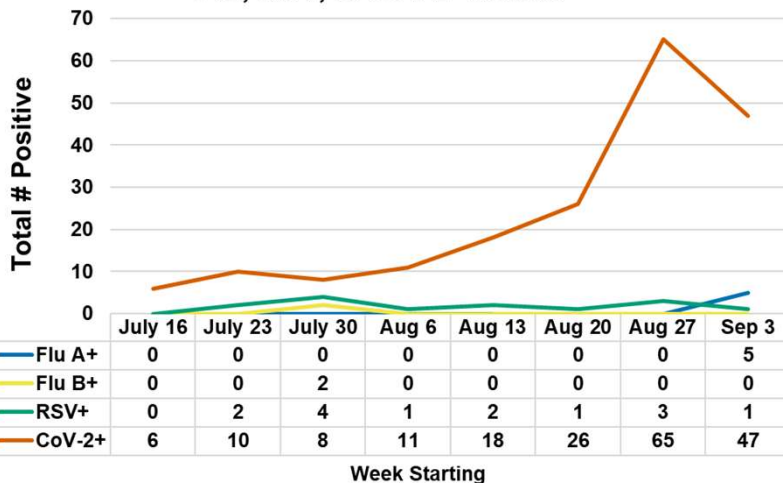
Flu A Subtyping

2009 H1N1	4
Seasonal H1	0
Seasonal H3	0
No Subtype	1
Pending subtype	0

Other Respiratory Viruses

Virus	#Tested	#Positive	% Positive
Adenovirus	235	7	3.0%
Coronavirus 229E	235	0	0.0%
Coronavirus HKU1	235	0	0.0%
Coronavirus NL63	235	0	0.0%
Coronavirus OC43	235	0	0.0%
Metapneumovirus	235	0	0.0%
Rhinovirus/Enterovirus	235	142	60.4%
Parainfluenza 1	235	2	0.9%
Parainfluenza 2	235	6	2.6%
Parainfluenza 3	235	0	0.0%
Parainfluenza 4	235	2	0.9%

Flu, RSV, & CoV-2 Trends

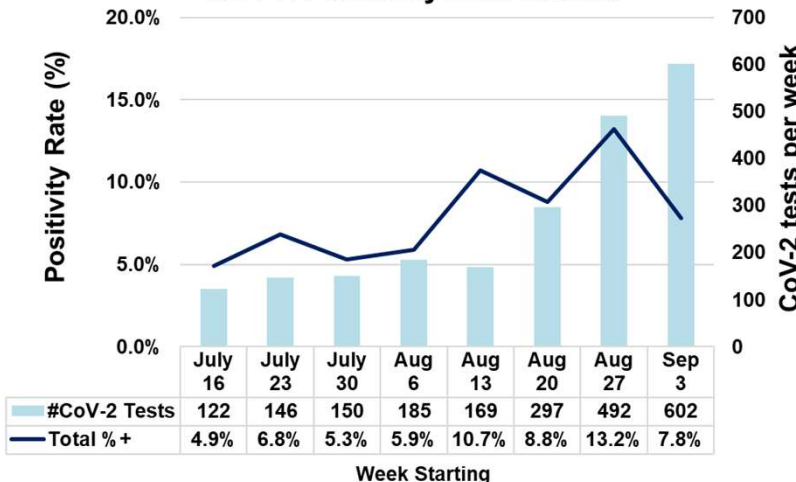


This report contains results for all tests ordered throughout the CHMCA network and performed at the Akron/Mahoning Valley laboratories. It also includes Point-of-Care tests (POCT) for influenza and SARS-CoV-2 (as of 2/2020) performed at ACHP locations. It does not yet contain POCT data for influenza testing at Urgent Care centers.

Notes on SARS-CoV-2 data:

In the top chart, the red CoV-2 line traces the total number of positive tests each week.

CoV-2 Positivity Rate Trends



In the bottom chart, the navy line shows the total positivity rate. Percentage breakdowns are computed and displayed for tests categorized either as "Diagnostic" (patients with symptoms) or "Screening" (test designated as pre-procedure testing in the test order.) in the table above. However, as of 11/21/22, the positivity rate trend is displayed as a single line for all tests (due to the very small number of Screening tests performed.)





Viral Epidemiology Snapshot: September 10-16, 2023

Prepared by Anne Hall, Ph.D., M(ASCP) on behalf of the Molecular Diagnostics/Virology Labs

This report contains results for all tests ordered throughout the CHMCA network and performed at the Akron/Mahoning Valley laboratories. It also includes Point-of-Care tests (POCT) for influenza and SARS-CoV-2 (as of 2/2020) performed at ACHP locations. It does not yet contain POCT data for influenza testing at Urgent Care centers.

Notes on SARS-CoV-2 data:

In the top chart, the red CoV-2 line traces the total number of positive tests each week.

In the bottom chart, the navy line shows the total positivity rate. Percentage breakdowns are computed and displayed for tests categorized either as “Diagnostic” (patients with symptoms) or “Screening” (test designated as pre-procedure testing in the test order.) in the table above. However, as of 11/21/22, the positivity rate trend is displayed as a single line for all tests (due to the very small number of Screening tests performed.)





Viral Epidemiology Snapshot: September 17-23, 2023

Prepared by Anne Hall, Ph.D., M(ASCP) on behalf of the Molecular Diagnostics/Virology Labs

This report contains results for all tests ordered throughout the CHMCA network and performed at the Akron/Mahoning Valley laboratories. It also includes Point-of-Care tests (POCT) for influenza and SARS-CoV-2 (as of 2/2020) performed at ACHP locations. It does not yet contain POCT data for influenza testing at Urgent Care centers.

Notes on SARS-CoV-2 data:

In the top chart, the red CoV-2 line traces the total number of positive tests each week.

In the bottom chart, the navy line shows the total positivity rate. Percentage breakdowns are computed and displayed for tests categorized either as “Diagnostic” (patients with symptoms) or “Screening” (test designated as pre-procedure testing in the test order.) in the table above. However, as of 11/21/22, the positivity rate trend is displayed as a single line for all tests (due to the very small number of Screening tests performed.)





Viral Epidemiology Snapshot: September 24-30, 2023

Prepared by Anne Hall, Ph.D., M(ASCP) on behalf of the Molecular Diagnostics/Virology Labs

This report contains results for all tests ordered throughout the CHMCA network and performed at the Akron/Mahoning Valley laboratories. It also includes Point-of-Care tests (POCT) for influenza and SARS-CoV-2 (as of 2/2020) performed at ACHP locations. It does not yet contain POCT data for influenza testing at Urgent Care centers.

Notes on SARS-CoV-2 data:

In the top chart, the red CoV-2 line traces the total number of positive tests each week.

In the bottom chart, the navy line shows the total positivity rate. Percentage breakdowns are computed and displayed for tests categorized either as “Diagnostic” (patients with symptoms) or “Screening” (test designated as pre-procedure testing in the test order.) in the table above. However, as of 11/21/22, the positivity rate trend is displayed as a single line for all tests (due to the very small number of Screening tests performed.)





Viral Epidemiology Snapshot: September 2023

Prepared by Anne Hall, Ph.D., M(ASCP) on behalf of the Molecular Diagnostics/Virology Labs

This report contains results for all tests ordered throughout the CHMCA network and performed at the Akron/Mahoning Valley laboratories. It also includes Point-of-Care tests (POCT) for influenza and SARS-CoV-2 (as of 2/2020) performed at ACHP locations. It does not yet contain POCT data for influenza testing at Urgent Care centers.

Notes on SARS-CoV-2 data:

In the top chart, the red CoV-2 line traces the total number of positive tests each week.

In the bottom chart, the navy line shows the total positivity rate. Percentage breakdowns are computed and displayed for tests categorized either as “Diagnostic” (patients with symptoms) or “Screening” (test designated as pre-procedure testing in the test order.) in the table above. However, as of 11/21/22, the positivity rate trend is displayed as a single line for all tests (due to the very small number of Screening tests performed.)

