



Viral Epidemiology Snapshot: June 25-July 1, 2023

Prepared by Anne Hall, Ph.D., M(ASCP) on behalf of the Molecular Diagnostics/Virology Labs

CoV-2, Flu, & RSV

Virus	#Tested	#Positive	% Positive
Flu A	109	0	0.0%
Flu B	109	1	0.9%
RSV	107	1	0.9%
CoV-2 Diagnostic	139	4	2.9%
CoV-2 Screening	0	0	0.0%

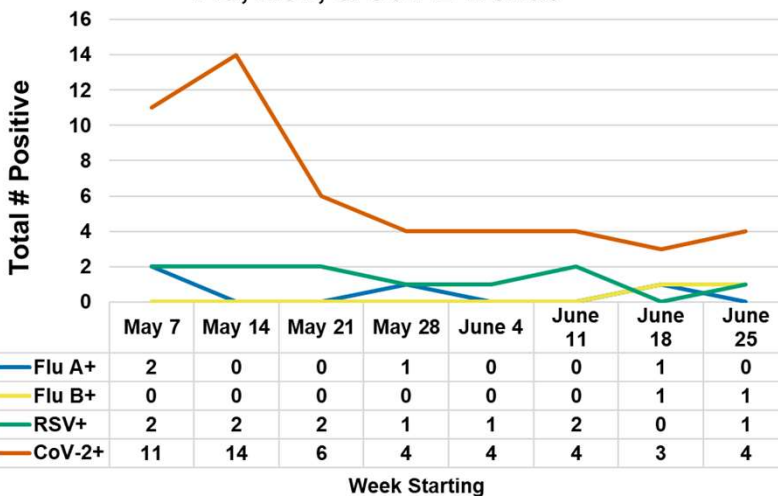
Other Respiratory Viruses

Virus	#Tested	#Positive	% Positive
Adenovirus	107	19	17.8%
Coronavirus 229E	107	0	0.0%
Coronavirus HKU1	107	0	0.0%
Coronavirus NL63	107	1	0.9%
Coronavirus OC43	107	0	0.0%
Metapneumovirus	107	0	0.0%
Rhinovirus/Enterovirus	107	29	27.1%
Parainfluenza 1	107	0	0.0%
Parainfluenza 2	107	4	3.7%
Parainfluenza 3	107	4	3.7%
Parainfluenza 4	107	0	0.0%

Bacterial Respiratory Infections (Molecular Tests)

Organism	#Tested	#Positive	% Positive
<i>Bordetella parapertussis</i>	112	2	1.8%
<i>Bordetella pertussis</i>	112	1	0.9%
<i>Chlamydia pneumoniae</i>	107	0	0.0%
<i>Mycoplasma pneumoniae</i>	108	0	0.0%

Flu, RSV, & CoV-2 Trends

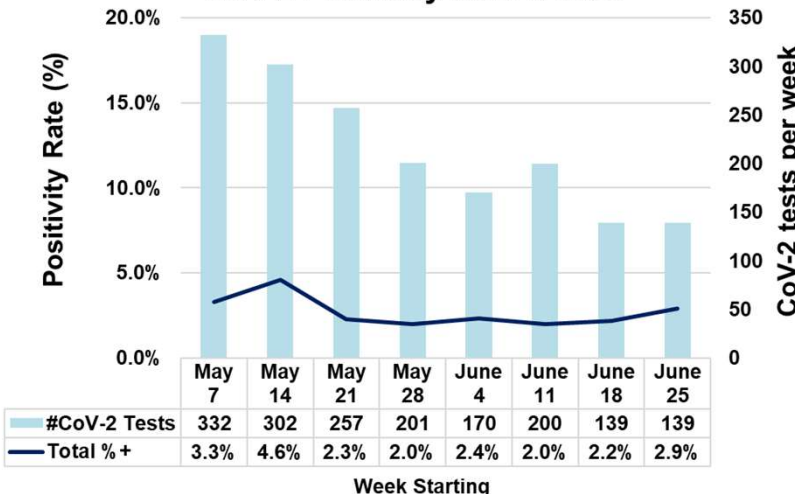


This report contains results for all tests ordered throughout the CHMCA network and performed at the Akron/Mahoning Valley laboratories. It also includes Point-of-Care tests (POCT) for influenza and SARS-CoV-2 (as of 2/2020) performed at ACHP locations. It does not yet contain POCT data for influenza testing at Urgent Care centers.

Notes on Influenza A subtyping:

Influenza A found by the Respiratory Film Array test will also include a subtype. Influenza A found by POCT methods will be listed as “no subtype”.

CoV-2 Positivity Rate Trends



Notes on SARS-CoV-2 data:

In the top chart, the red CoV-2 line traces the total number of positive tests each week.

In the bottom chart, the navy line shows the total positivity rate. Percentage breakdowns are computed and displayed for tests categorized either as “Diagnostic” (patients with symptoms) or “Screening” (test designated as pre-procedure testing in the test order.) in the table above. However, as of 11/21/22, the positivity rate trend is displayed as a single line for all tests (due to the very small number of Screening tests performed.)

