

# Viral Epidemiology Snapshot: January 21-27, 2024

Prepared by Anne Hall, Ph.D., M(ASCP) on behalf of the Molecular Diagnostics/Virology Labs

## CoV-2, Flu, & RSV

Virus	#Tested	#Positive	% Positive
Flu A	853	181	21.2%
Flu B	853	124	14.5%
RSV	331	54	16.3%
CoV-2	610	65	10.7%

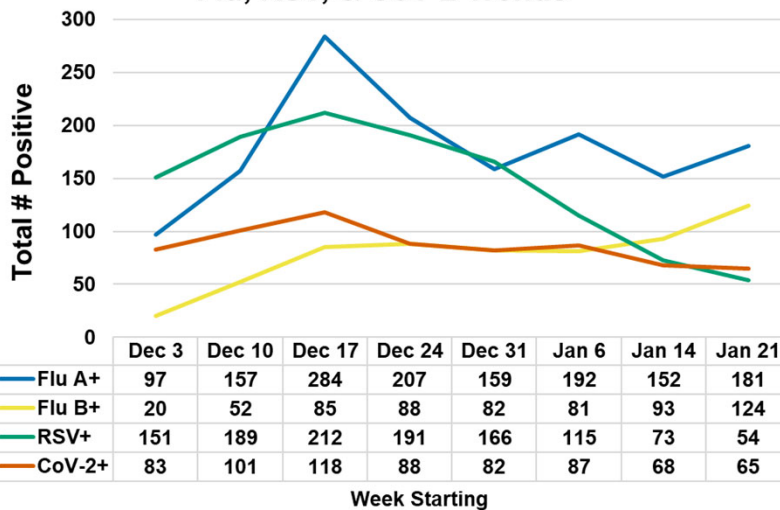
## Other Respiratory Viruses

Virus	#Tested	#Positive	% Positive
Adenovirus	306	17	5.6%
Coronavirus 229E	306	1	0.3%
Coronavirus HKU1	306	3	1.0%
Coronavirus NL63	306	1	0.3%
Coronavirus OC43	306	23	7.5%
Metapneumovirus	306	1	0.3%
Rhinovirus/Enterovirus	306	45	14.7%
Parainfluenza 1	306	1	0.3%
Parainfluenza 2	306	1	0.3%
Parainfluenza 3	306	3	1.0%
Parainfluenza 4	306	1	0.3%

## Bacterial Respiratory Infections (Molecular Tests)

Organism	#Tested	#Positive	% Positive
<i>Bordetella parapertussis</i>	309	0	0.0%
<i>Bordetella pertussis</i>	309	0	0.0%
<i>Chlamydia pneumoniae</i>	306	0	0.0%
<i>Mycoplasma pneumoniae</i>	307	1	0.3%

## Flu, RSV, & CoV-2 Trends

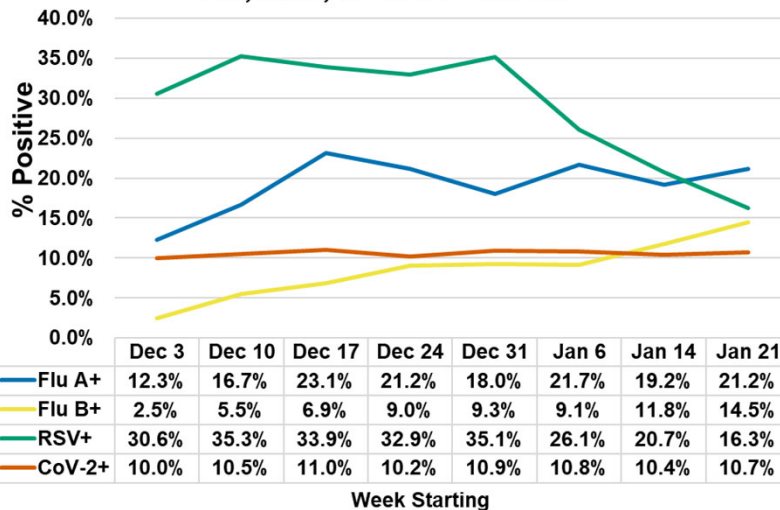


## Flu A Subtyping

2009 H1N1	38
Seasonal H1	0
Seasonal H3	6
No Subtype	137
Pending subtype	0

This report contains results for all tests ordered throughout the CHMCA network. As of 9/19/23, the data set includes all Point of Care Testing performed at ACHPs and Urgent Care Centers, as well as the central hospital laboratories.

## Flu, RSV, & CoV-2 Trends



As of 10/1/23, SARS-CoV-2 will be tracked in total, rather than in "Diagnostic" and "Screening" categories

The top chart displays the 8-week trend for total number of positive tests for Flu A, Flu B, RSV, and SARS-CoV-2.

The bottom chart displays the 8-week trend for positivity rate (# positive/ total # tested) Flu A, Flu B, RSV, and SARS-CoV-2.

