



# Viral Epidemiology Snapshot: April 23-29, 2023

Prepared by Anne Hall, Ph.D., M(ASCP) on behalf of the Molecular Diagnostics/Virology Labs

## CoV-2, Flu, & RSV

Virus	#Tested	#Positive	% Positive
Flu A	217	1	0.5%
Flu B	217	0	0.0%
RSV	196	4	2.0%
CoV-2 Diagnostic	363	10	2.8%
CoV-2 Screening	4	0	0.0%

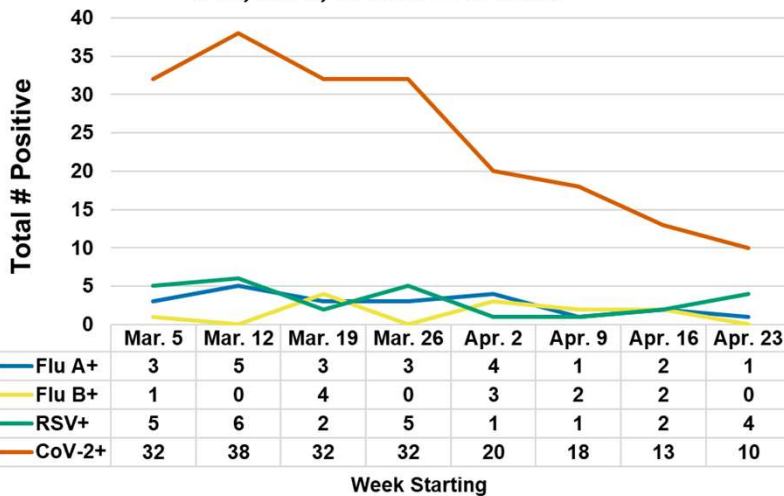
## Other Respiratory Viruses

Virus	#Tested	#Positive	% Positive
Adenovirus	197	44	22.3%
Coronavirus 229E	196	1	0.5%
Coronavirus HKU1	196	0	0.0%
Coronavirus NL63	196	17	8.7%
Coronavirus OC43	196	1	0.5%
Metapneumovirus	196	6	3.1%
Rhinovirus/Enterovirus	196	49	25.0%
Parainfluenza 1	196	0	0.0%
Parainfluenza 2	196	5	2.6%
Parainfluenza 3	196	21	10.7%
Parainfluenza 4	196	0	0.0%

## Flu A Subtyping

2009 H1N1	1
Seasonal H1	0
Seasonal H3	0
No Subtype	0
Pending subtype	0

## Flu, RSV, & CoV-2 Trends

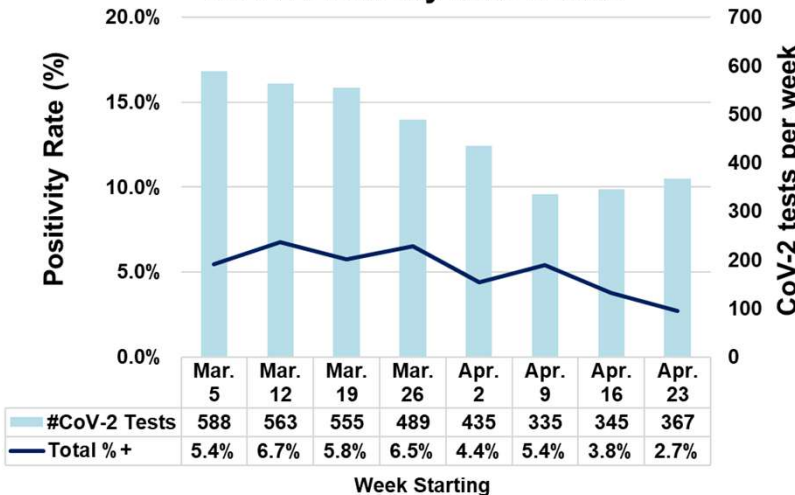


This report contains results for all tests ordered throughout the CHMCA network and performed at the Akron/Mahoning Valley laboratories. It also includes Point-of-Care tests (POCT) for influenza and SARS-CoV-2 (as of 2/2020) performed at ACHP locations. It does not yet contain POCT data for influenza testing at Urgent Care centers.

### Notes on Influenza A subtyping:

Influenza A found by the Respiratory Film Array test will also include a subtype. Influenza A found by POCT methods will be listed as "no subtype".

## CoV-2 Positivity Rate Trends



### Notes on SARS-CoV-2 data:

In the top chart, the red CoV-2 line traces the total number of positive tests each week.

In the bottom chart, the navy line shows the total positivity rate. Percentage breakdowns are computed and displayed for tests categorized either as "Diagnostic" (patients with symptoms) or "Screening" (test designated as pre-procedure testing in the test order.) in the table above. However, as of 11/21/22, the positivity rate trend is displayed as a single line for all tests (due to the very small number of Screening tests performed.)

